



FINISHES



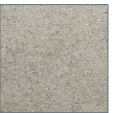
Honed



Brushed



Pumiced



Sanded Wash



Heritage Wash



Bushhammered



Splitface



Tumbled

Elegant and sophisticated, this monument grade limestone is perfectly suited for a full range of fabrication possibilities. The subtle graining characteristic inherent in the material enhances any application. The warm neutral grey tone combines beautifully with other materials in the most traditional to the most modern of designs.

APPLICATIONS		SPECIFICATIONS		TECHNICAL DATA		
<ul style="list-style-type: none"> Residential Paving Full Depth Veneer Thin Veneer L Shaped Corners 	<ul style="list-style-type: none"> Dry Stack Landsc. Walls Architectural Items Freeze Thaw Veneer 	<p>Source: Domestic</p> <p>Color Range: Beige, Blue, Grey</p> <p>Std. Block Size: 48" - 60"W x 80" - 120"L</p> <p>Std. Thickness: 30" - 48"</p> <p>Std. Lead Time: 4 - 6 weeks</p>	<p>ASTM C97</p> <p>ASTM C97</p> <p>ASTM C99</p> <p>ASTM C170</p> <p>ASTM C880</p>	<p>Density (lb/cf)</p> <p>Absorption (%)</p> <p>Mod. of Rupture (psi)</p> <p>Compr. Strength (psi)</p> <p>Abrasion Resistance</p>	<p>139</p> <p>6.15</p> <p>1,310</p> <p>8,950</p> <p>5.66</p>	
<p>www.maiden-stone.com/products/windsor_select_limestone</p>						

Stone is a natural product that varies in color, texture, and fossil activity (if applicable). All technical data is deemed to be correct but is not guaranteed and should be independently verified.